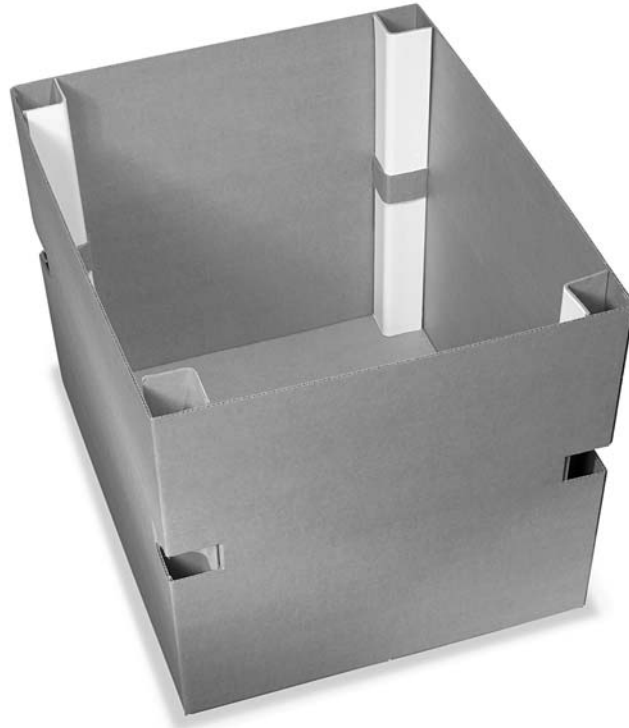


# Thinking Inside the Box



Making two parallel die-cuts in each corner of a corrugated carton and pushing the resulting band inward is an easy, economical way to hold VBoard® edge protectors in place without the use of additional materials such as strapping or glue. Positioning the VBoard with its outside edge toward the inside of the carton, as shown, provides other advantages too.

When it comes to stacking strength, the strongest part of a box is at its corner. Simply adding VBoard to the corners of a carton reinforces the corrugated to provide extra stacking strength. But inverting the VBoard creates four more corners inside the carton for even greater protection against compression. And because stacked cartons or pallets have the greatest compression strength when their corners are perfectly aligned, inverting the VBoard allows for a greater margin of error in stacking by creating a larger area of strength for the pallet or carton above to rest on.

Inverted VBoard acts as a spacer, too, keeping product away from the edges of the carton for added protection against forklift punctures.

*Protective Packaging*  
**SOLUTIONS**



**Laminations®**  
Great Northern Corporation  
**GNC®**

©2003 Laminations

Issue No.

**5**

SIC Codes:

**Any Cartoned  
Products**

Your **First Call** For Protective Packaging Solutions

[www.laminationsonline.com](http://www.laminationsonline.com)